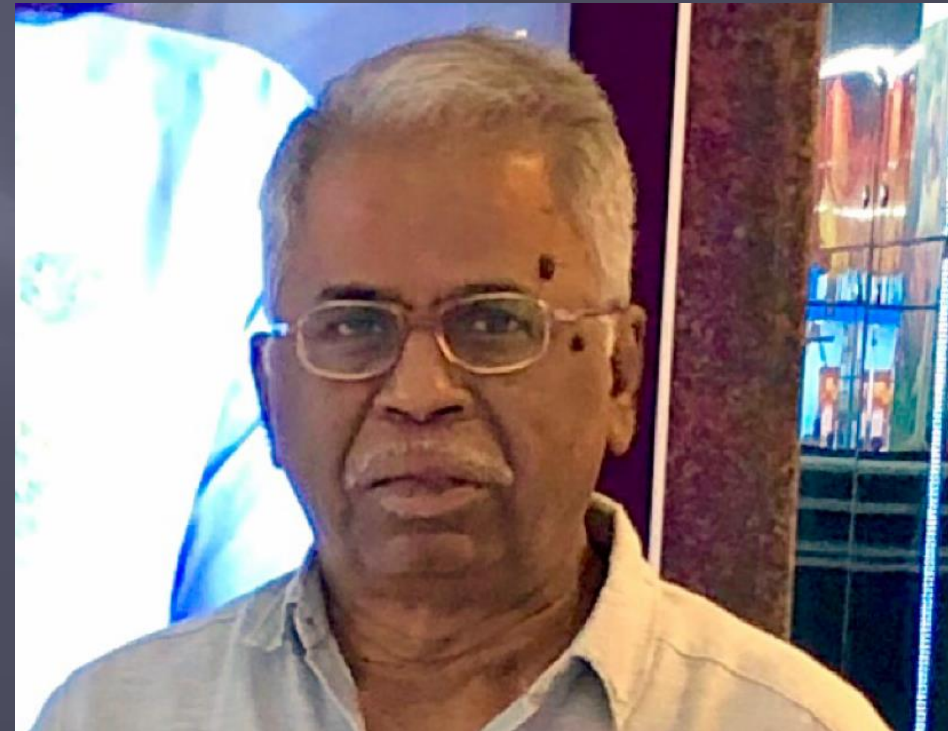


DENTAL IMPLANTS

MANUFACTURING

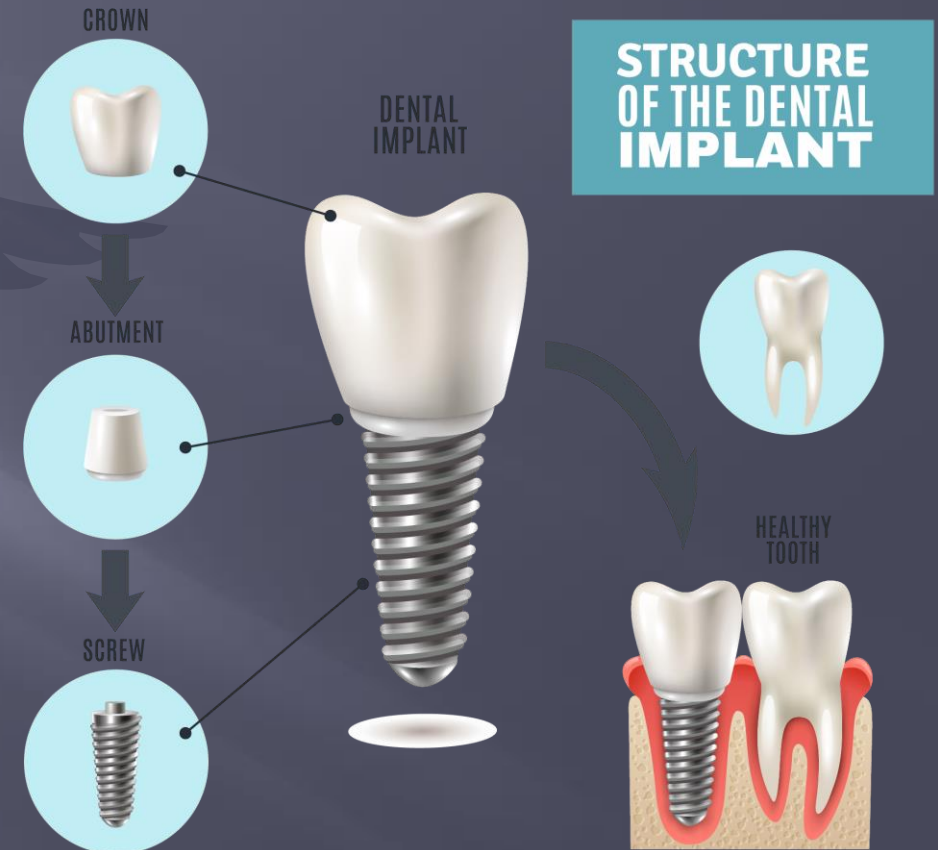
Presentation by

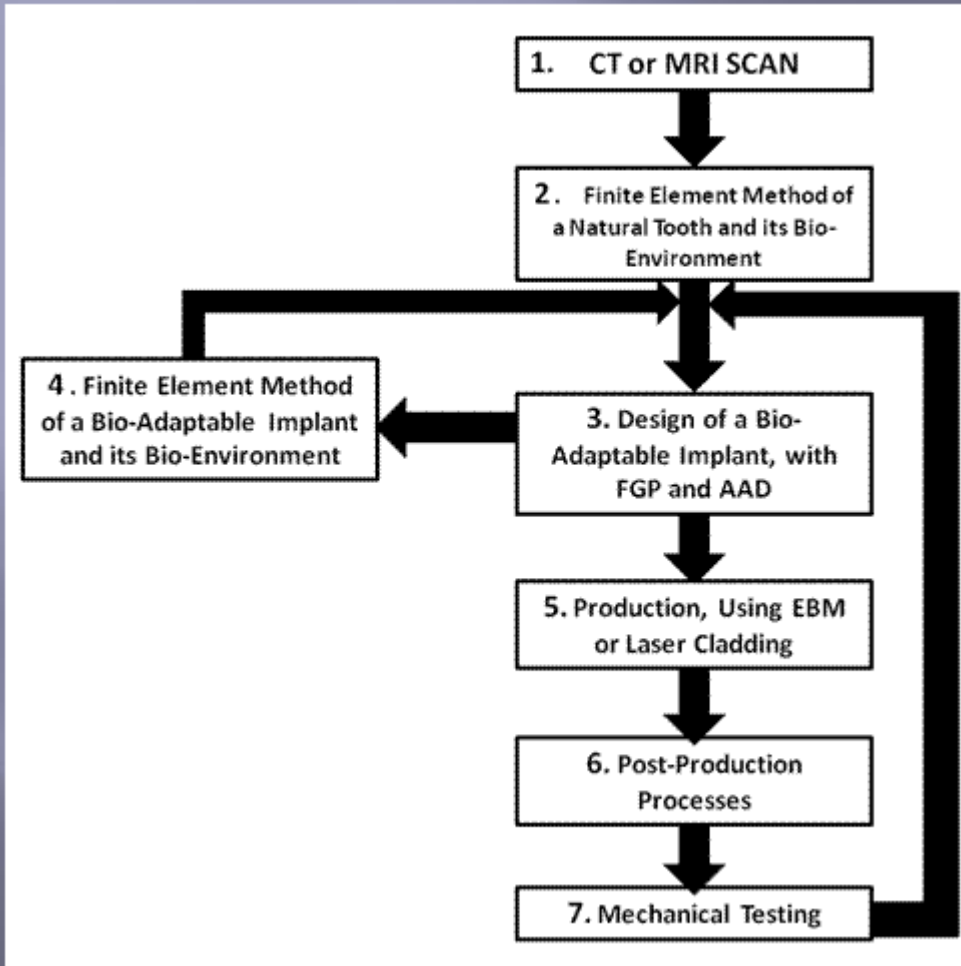
<http://www.primaryinfo.com>



Dental Implants

- ❑ Modern implants in combination with an abutment and advanced prosthetics can almost perfectly mimic and replace a single tooth, several teeth or a complete arch
- ❑ Every patient requires a customized solution
- ❑ Individualized crowns in acrylic, zirconia, alumina, titanium, cobalt chromium and lithium disilicate are being offered
- ❑ An individual crown can be used to restore or replace a single tooth. Crowns can be supported by existing teeth or implants





PROSTHETIC CHOICE

Choice between square or O-ball head depending on fixed or removable applications.

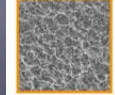
MICRO GROOVING

The lower aspect of the implant is endowed with micro grooves to help maintain cortical bone.

FINE THREAD IMPLANTS

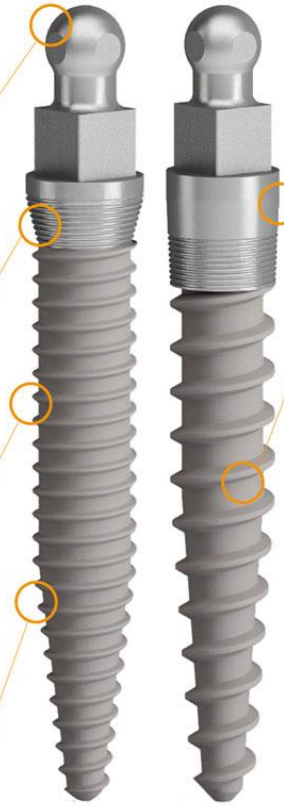
The fine thread SD implants are designed to facilitate the placement in hard bone.

SEM 1000X



PASSIVATED SURFACE

The implant surface is blasted with aluminum oxide and then subjected to progressive etching using citric acid. This surface treatment accelerates the osteointegration process by providing a greater and more uniform area of contact between bone and implant while favoring an immediate implant load. The treatment provides for a uniform surface with progressive trabeculation to be achieved.



IMPLANT BODY

The anatomically shaped implants are produced from medical grade 5 Titanium.

SMOOTH COLLAR

The top aspect of every collared implant is smooth so as to better accommodate soft tissue.

AGGRESSIVE THREAD IMPLANTS

The aggressive thread SD implants are designed for the added compression and surface area required in soft bone placement.

COLLARED AND NON-COLLARED MODELS

C-Tech provides SD models with and without gingival collars, allowing the practitioner to better address cases with differing gingival thicknesses.



DOUBLE HELIX THREADING

The revolutionary double threads, unique in their nature, allow for ease of insertion and optimal primary stability. This advantage simplifies the work of the oral surgeon and reduces considerably the time of insertion. The thread has a particular 90° degrees beveled profile: whose shape, angle and depth are specifically conceived to increase contact surface with the bone. It reduces the invasive process and improves at the same time the osseointegration.



There are
many machinery
suppliers



WE HAVE THE PROJECT INFORMATION

Contains complete data of the manufacturing process, machinery required, suppliers of machinery and related project information

Take a look at the project page in primaryinfo.com in the next slide



https://www.primaryinfo.com/projects/dental-implants-manufacturing.htm

Dental Implants

Primary Information Services

[Home](#) . [Porcelain Implant](#) . [Dental Fillings](#) . [Ordering Information](#) . [Contact](#)

Project, Trade Technology Information - Contents on CD ROM

Information profile @ a Glance

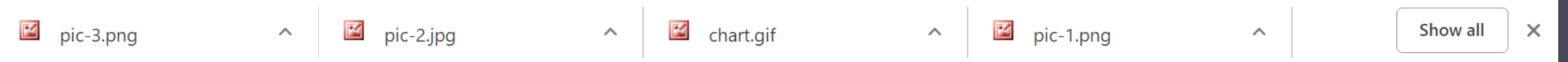
- The dental market is one of the most attractive markets in healthcare
- Modern implants in combination with an abutment and advanced prosthetics can almost

Basic Information

- Implants and Esthetics
- Smart Esthetics On Implants
- Dental Restorations
- Single Implant

Project , Patents & Technology Information

- Project Proposal
- Project Options
- Cad/Cam systems, materials & Clinical guidelines
- Dental equipments supplier - Italy
- Equipment Supplier - UK
- Equipments & Prices
- Complete system offer
- Scanner, Cad/Cam , Milling Equipments



QUESTIONS ?

<mailto:primaryinfo@gmail.com>

